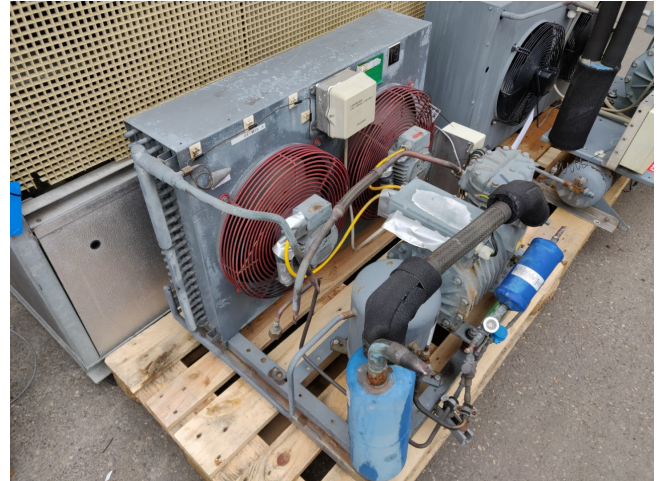


DWM DLSGP 40x EWL Condensing unit

Specifications

Marque	DWM
Le type	DLSGP 40x EWL Condensing unit
Réfrigérant	Freon
Refrigerant type	R 404 A or other types
kW at -20°C/+40°C	8,3
kW at -30°C/+40°C	4,9
Sur le châssis en acier	✓
Remarques	Y.O.B. DWM 2010 // Y.O.B. KOMA 1994
Condensing Unit	✓
Tailles	1000x730x730 mm (LxWxH)
Stock	1



Description

Used DWM DLSGP 40x EWL Condensing unit

Used DWM DLSGP 40X EWL // this DWM unit is attached to a KOMA - T81 LSC 400 HLX EWL steel base with a condensing unit that has 2x Fans: Copeland 1350rpm (D-Mot. 1PP5061 - 4 AD 29Z,S1 60W)

